



1N5817 1N5818 1N5819

Description: Rugao Liantuo Electronics provides Schottky Barrier diode.

-1A 20V schottky rectifier 1N5817

-1A 30V schottky rectifier 1N5818

-1A 40V schottky rectifier 1N5819

1N5817, 1N5818, 1N5819 Characteristics:

It has a low forward voltage drop and a very fast switching action and less energy is wasted as heat.

Description:

Schottky Barrier Diode is a semiconductor element with low power consumption, large current and super-high speed. Widely used in switching power supply, inverter, driver and other circuits, as high frequency, low voltage, high current rectifier diodes, protection diodes, or in microwave communication circuits as rectifier diodes, small signal detection diodes.

We are offering Schottky Barrier Diode's characteristics:

Features

- Schottky Barrier Chip
- Low Power Loss, High Efficiency
- High Surge Capability
- High Current Capability and Low Forward Voltage Drop
- For Use in Low Voltage, High Frequency Inverters, FreeWheeling, and Polarity Protection Application
- Lead Free Finish, RoHS Compliant

Mechanical Data

- Case: DO41/A405
- Case Material: Molded Plastic. UL Flammability Classification Rating 94V-0
- Moisture Sensitivity: Level 1 per J-STD-020C
- Terminals: Plated axial leads
- Polarity: Color band denotes cathode end
- Weight: 0.3 grams (approximate)

The detail types are as follows:

1N5817, 1N5818, 1N5819, SR240, SR260, SR2100, 1N5822, SR340, SR360, SR3100, SR3200, SR3100L, SR540, SR560, SR5100, SR5200, SR5100L, SR840, SR860, SR8100, SR8200, SS14, SS16, SS1100, SS24, SS26, SS2100, SS34, SS36, SS3100, SS54, SS56, SS5100, 10SQ045, 15SQ045, 25SQ045, 30SQ045

Electrical Characteristics(Tamb=25 oC,unless otherwise specified)



联拓电子

1N5817/5818/1N5819

	Symbols	1N5817	1N5818	1N5819	Unit
Maximum repetitive peak reverse voltage	V_{RRM}	20	30	40	V
Maximum RMS voltage	$V_{R(RMS)}$	14	21	28	V
Maximum DC blocking voltage	V_{DC}	20	30	40	V
Maximum average forward rectified current	I_{FM}	1.0			A
Maximum forward voltage @IF = 1.0A @IF = 3.0A	V_F	0.500 0.750	0.550 0.875	0.600 0.900	V
Peak forward surge current 8.3 ms single half sine-wave	I_{FSM}	25			A
Maximum reverse current @TA = 25°C @TA = 100°C	IR	0.5 10			mA
Typical thermal resistance	$R_{\theta JA}$	50			°C/W
Type junction capacitance $V_R = 4.0V, f = 1.0MHz$	C_j	110			pF
Operating junction temperature range	T_j	- 50 --- +125			°C
storage temperature range	T_{STG}	- 50 --- +150			°C

Related Schottky Barrier Diodes:

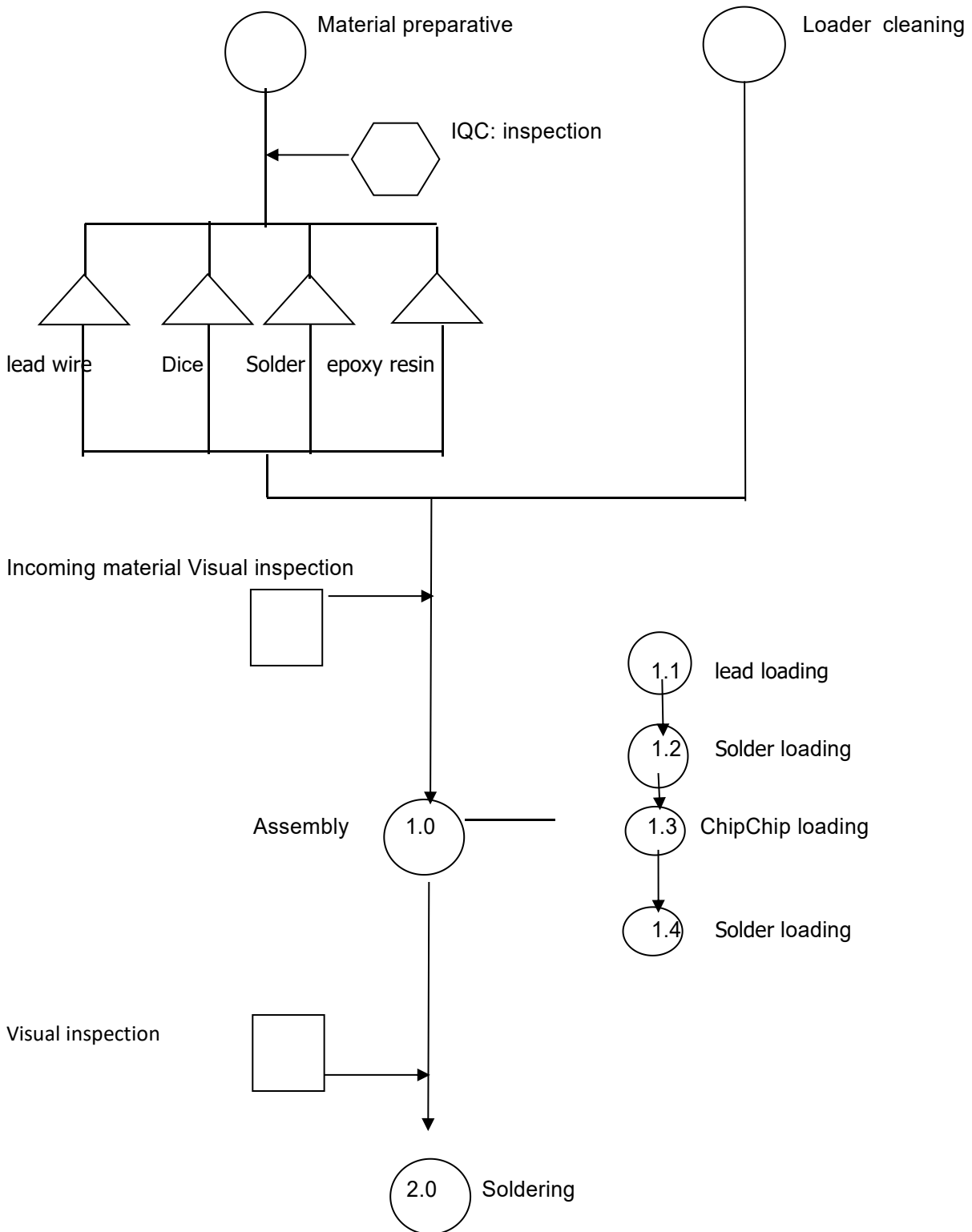
$I_{F(AV)}$ (A)	$V_{RRM}(V)$									V_F (V)	Package
	20	30	40	50	60	80	100	150	200		
1.0	1N5817 *	1N5818 **	1N5819 ***	—	—	—	—	—	—	*0.45 **0.55 ***0.6	DO-41
	1N5817S *	1N5818S **	1N5819S ***	—	—	—	—	—	—		A-405
	SR120 *	SR130 *	SR140 *	SR150 **	SR160 **	SR180 ***	SR1100 ***	SR1150 ****	SR1200 *****	*0.55 **0.7 ***0.85 ****0.9 *****0.95	DO-41
	SR120S *	SR130S *	SR140S *	SR150S **	SR160S **	SR180S ***	SR1100S ***	SR1150S ****	SR1200S *****		A-405
	SS12 *	SS13 *	SS14 *	SS15 **	SS16 **	SS18 ***	SS110 ***	SS115 ****	SS120 *****	*0.55 **0.7 ***0.85 ****0.9 *****0.95	SMA
	S12 *	S13 *	S14 *	S15 **	S16 **	S18 ***	S110 ***	S115 ****	S120 *****		SOD123
2.0	SR220A *	SR230A *	SR240A *	SR250A **	SR260A **	SR280A ***	SR2100A ***	SR2150A ****	SR2200A *****	*0.55 **0.7 ***0.85 ****0.9 *****0.95	DO-41
	SR220 *	SR230 *	SR240 *	SR250 **	SR260 **	SR280 ***	SR2100 ***	SR2150 ****	SR2200 *****		DO-15
	SS22A *	SS23A *	SS24A *	SS25A **	SS26A **	SS28A ***	SS210A ***	SS215A ****	SS220A *****	*0.55 **0.7 ***0.85 ****0.9 *****0.95	SMA
	SS22B *	SS23B *	SS24B *	SS25B **	SS26B **	SS28B ***	SS210B ***	SS215B ****	SS220B *****		SMB
3.0	1N5820 *	1N5821 *	1N5822 *	—	—	—	—	—	—	*0.475 **0.5 ***0.55	DO-201AD
	SR320 *	SR330 *	SR340 *	SR350 **	SR360 **	SR380 ***	SR3100 ***	SR3150 ****	SR3200 *****	*0.55 **0.7 ***0.85 ****0.9 *****0.95	DO-201AD
	SS32C *	SS33C *	SS34C *	SS35C **	SS36C **	SS38C ***	SS310C ***	SS315C ****	SS320C *****	*0.55 **0.7 ***0.85 ****0.9 *****0.95	SMC
	SS32B *	SS33B *	SS34B *	SS35B **	SS36B **	SS38B ***	SS310B ***	SS315B ****	SS320B *****		SMB
5.0	SR520 *	SR530 *	SR540 *	SR550 **	SR560 **	SR580 ***	SR5100 ***	SR5150 ****	SR5200 *****	*0.55 **0.7 ***0.85 ****0.9 *****0.95	DO-201AD
8.0	SR820 *	SR830 *	SR840 *	SR850 **	SR860 **	SR880 ***	SR8100 ***	SR8150 ****	SR8200 *****	*0.55 **0.7 ***0.85 ****0.9 *****0.95	DO-201AD

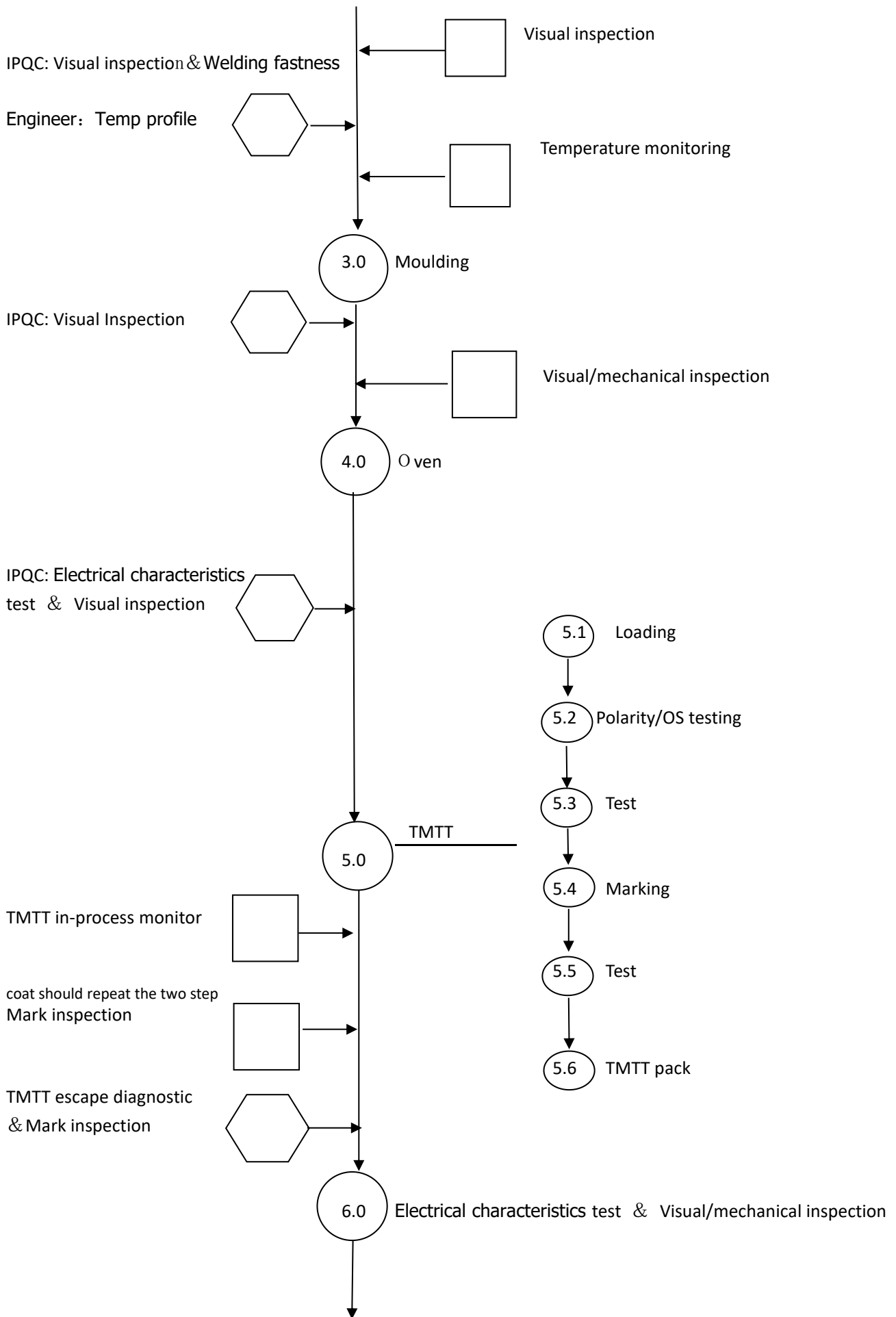
*/**/ : Show different corresponding value of trr and vf

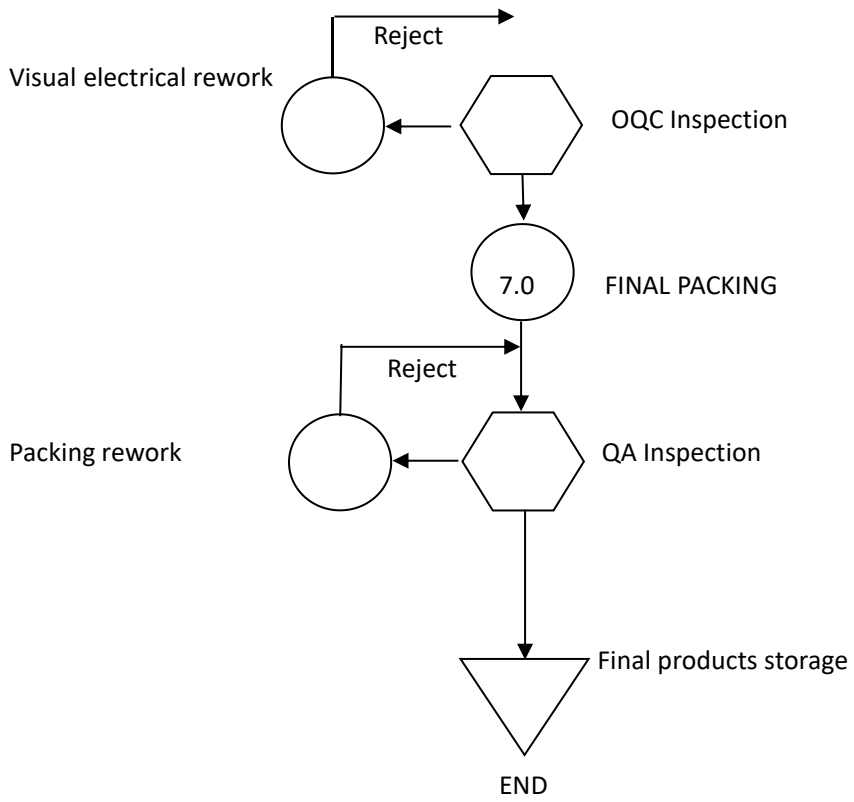
TRR test term : IF=0.5A IR=1.0A IRR=0.25A

Testing environment:TA_(Max) = 25°C


Flow chart of Product



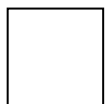


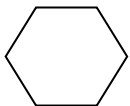


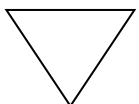
※ SYMBOLS IDENTIFICATION

 Raw materials stock inventory

 Process/operation

 In-process monitor

 IQC/IPQC/OQC/QA Inspection

 Finished goods inventory

Packing Information:

All our products are packed with standard export paper carton. If order quantity is not very big, we will advise to use DHL/UPS/FedEx/TNT/EMS or other Express, however for large quantity, considering high freight charges, usually we will recommend air or sea shipment through your nominated forwarder in Shanghai.

Packing Type	Minimum Packing Quantity (PCS)	Quantity/Carton (PCS)	gross weight/Carton (KG)	Volume/Carton (M3)	Remark
R-1	5,000	50,000	11.0	0.036	Taping
A-405	5,000	50,000	12.8	0.036	Taping
DO-41	5,000	50,000	15.0	0.036	Taping
DO-15	3,000	30,000	13.0	0.036	Taping
DO-27	1,250	12,500	13.0	0.036	Taping
R6	500	5,000	13.0	0.036	Taping
R6	800	4,000	10.0	0.048	In Reel
SMA(DO214AC)	5,000	100,000	15.0	0.040	In Reel
SMB(DO214AA)	3,000	48,000	13.0	0.040	In Reel
SMC(DO214AB)	3,000	48,000	18.0	0.040	In Reel

Authentication certificate

HBC

质量管理体系认证证书

证书编号: HBC21Q0105R05
统一社会信用代码: 91320682MA1M3285B

兹证明:
如皋市联拓电子有限公司
质量管理体系符合:
GB/T 19001-2016/ISO 9001:2015 标准

证书覆盖范围: 电子二极管的生产、销售

注册地址: 如皋市如城街道红星西村二组 32 号
审核地址: 江苏省南通市如皋市惠政西路 555 号 (图腾集团内)

颁证日期: 2021 年 3 月 23 日
有效期至: 2024 年 3 月 22 日
初次颁证日期: 2021 年 3 月 23 日

请于 2022 年 3 月 22 日前进行监督或再认证审核, 逾期未通过审核, 本证书作废
本证书信息可在国家认证认可监督管理委员会官方网站 (<http://www.cnca.gov.cn>) 查询

EN CNCA-R-2019-590

签发人: 陈亮

本证书须在国家规定的各行政许可、资质及强制性产品认证有效期内并正常接受年度审核的情况下保持有效。
本证书可在中国国家认证认可监督管理委员会官方网站 <http://www.cnca.gov.cn> 上查询。

上海惠博认证有限公司
地址: 中国-上海市嘉定区墨玉路28号嘉正国际大厦714室

HBC

Quality Management System Certificate

Certificate No.: HBC21Q0105R05
Unified Social Credit Code: 91320682MA1M3285B

Hereby certify:
Rugao Liantuo Electronics Co.,Ltd.
Quality management system conforms to:
GB/T 19001-2016/ISO 9001:2015 Standard

Certificate Scope: Production and sales of electronic diodes

Registered Address: No.32, Group 2, Hongxing West Village, Rucheng Street, Rugao City
Business Address: No.555 Huizheng West Road, Rugao City, Nantong City, Jiangsu Province (inside totem group)

Certificate Issue Date: March 23, 2021
Expiration Date: March 22, 2024
First Certificate Issue Date: March 23, 2021

Please conduct supervision or recertification audit before March 22, 2022. If the audit fails within the time limit, this certificate will be invalid.
The information on this certificate can be found on the CNCA official website (<http://www.cnca.gov.cn>).

EN CNCA-R-2019-590

Issuer: 陈亮

This certificate remains effective only when it meets the condition that it is within the validity of administrative license, qualification and compulsory product certification, and also it must accept the normal annual audit.
This certificate can be found on the official website of China Certification and Accreditation Administration <http://www.cnca.gov.cn>.

Shanghai Huibo Certification Co.,Ltd.
Address: Room 714, Jiazheng international building, 28 Moyu Road, Jiading District, Shanghai, China

FAQ:

Q1:How do I place an order?

A:You can place an order by email or online.

Q2:How can I pay you?

A:T/T, Paypal, Western Union are our most commonly used methods.

Q3:What is the ordering procedure?

A: First we discuss order details, product details. We will email you Proforma based on your order for your information. Then you will be requested to prepay full payment or deposit Before we produce the goods, After receiving the deposit, we start processing the order. If we don't have stock, we usually need 7-15 days. Before the production is completed, We will contact you for shipping details and balance payment. After the payment is completed, we will start shipping for you.

Q4:How can I get the price?

A:We usually quote within 24 hours after receiving your inquiry (except weekends and holidays). If you are very anxious to get the price, please email us or contact us by other means so that we can provide you with a quotation.

Q5:What is your delivery time?

A:It depends on the number of orders and the season in which you placed the order. Usually we can ship within 7-15 days, if the quantity is relatively large, we need to negotiate the delivery time

Q6: Do your products comply with RoHS directive?

A:Yes,all of our products comply with RoHS and REACH Reaulations.

Q7: How do you handle customer's claims?

A: We will reply within 24 hours after getting customer's claims. If products ger defective,we will ask detail failure and application sitation or request return of samples for analysis and provide 8d report in 7 days.

Q8:What kind of transportation is usually used?

A: We can ship the products all the world. DHL, TNT, UPS, EMS, China Post are all available. You can track the situation of your product on website after they are shipped out.





